



High Country Rural Planning Organization (RPO)

Municipalities and Counties of
Alleghany, Ashe, Avery, Mitchell, Watauga, Wilkes, and Yancey



*“Serving North Carolina’s High Country with Continuing, Cooperative, and
Comprehensive Transportation Planning”*

Woodie Young, RTAC Chair

David Graham, Transportation Planner

Kevin Rothrock, RTCC Chair

RURAL TRANSPORTATION COORDINATING COMMITTEE (RTCC)

Agenda **May 21, 2025** **10:00 AM**

Action Items

1. Approval of March 19, 2025 Minutes (RTCC Chair)
2. Approval of FY 25-26 Planning Work Program (PWP) (David Graham/RTCC Chair)

Informational Items

3. Blue Ridge Parkway Closures & Construction Projects Update (Mike Schlerf, National Park Park Service Public Affairs Officer)
4. NCDOT Region 4 Travel Demand Model Presentation (NCDOT Transportation Planning Division Representatives)
5. Prioritization 8.0 Update (David Graham)
6. Project Development Update (David Graham)
7. Division Engineers Report (NCDOT Division 11 and Division 13 Representatives)

Other Items

8. Committee Member Comments/Other Business (RTCC Chair)
9. Public Comment (RTCC Chair)
10. Adjournment (RTCC Chair)

The next regularly scheduled meeting of the RTCC is August 20, 2025 at 10:00 AM.

This information is available in Spanish or any other language upon request. Please contact High Country RPO Transportation Planner at (828) 265-5434 ext. 135 or at 468 New Market Blvd. Boone, NC 28607 for accommodations for this request.

Esta información está disponible en español o en cualquier otro idioma bajo petición. Por favor, póngase en contacto con High Country RPO Transportación Planner al (828) 265-5434 ext. 135 o en 468 New Market Blvd. Boone, NC 28607 de alojamiento para esta solicitud.

High Country RPO
Rural Transportation Coordinating Committee (RTCC)
March 19, 2025
Minutes

The Rural Transportation Coordinating Committee held their quarterly meeting (rescheduled from February), March 19, 2025 at 10:00 am in the High Country Council of Governments Board Room in Boone. The following members were present:

Kevin Rothrock – Town of Blowing Rock
Kenny Heavner – NCDOT Div. 11
Chad Young – NCDOT Division 13
Jason Walker – Watauga County
Todd Moody – Town of Boone
Randy Steskal – NCDOT
Reuben Crummy – NCDOT TPD
Neal Winebarger – ASU

Ken Noland – Town of Wilkesboro
Chris Grubb – HCCOG
Adam Stumb – Ashe County
Craig Hughes – AppalCart
Melissa Rector – Alleghany in Motion
Brantley Price – Town of West Jefferson
Dylan Blankley – Town of N. Wilkesboro
Jose Butron – Town of Sparta

Guests Present: David Wayne – NCDOT Div. 11, Alex Reese – NCDOT Div. 11, Dean Ledbetter – NCDOT Div. 11, Stephen Sparks – NCDOT Div. 13, Scott Killough-NCDOT Div. 13, Matthew Levi – Ashe County, Nick Farmerie – Ashe County, and Gerald Carter – NCDOT TPD. Guest present via Zoom: Jason Schronce – NCDOT Div. of Aviation

Staff Present: David Graham – Transportation Planner, Julie Wiggins – Executive Director, and Victoria Oxentine – Communications Manager.

Call to Order

Chairman Kevin Rothrock called the meeting to order.

Approval of Minutes

Ken Noland moved to accept the minutes of the November 20, 2024 meeting. Seconded by Brantley Price. Motion carried.

Endorsement of Alleghany County Comprehensive Transportation Plan (CTP)

David Graham, Transportation Planner presented the Alleghany County CTP and noted that the local steering committee and public input results recommended 3 intersection improvements, 4 deviated fixed routes, 25 pedestrian routes, and 4 multi-use paths. Mr. Graham and Reuben Crummy presented and received local approval from Alleghany County and the Town of Sparta recently. Brantley Price made a motion to approve/endorse the Alleghany County Comprehensive Transportation Plan. Jose Butron seconded the motion. Motion carried.

NCDOT Traffic Engineering Presentation

Dean Ledbetter, NCDOT Division 11 Corridor Development Engineer presented a slideshow overviewing traffic engineering roles and processes. Mr. Ledbetter also discussed traffic signage, crosswalks, and traffic signals.

NCDOT Aviation Presentation

Jason Schronce, NCDOT Division of Aviation Deputy Director of Planning & Programming joined the meeting via Zoom and presented a slideshow overviewing the functions of the 72 public use airports, 10 commercial airports, and 62 general aviation airports in NC noting the 3 airports in the High Country RPO region. Mr. Schronce also discussed the monetary contributions airports provide to the NC economy and the aviation department's response in the aftermath of Hurricane Helene.

2026-2035 STIP & Project Development Update

David Graham, Transportation Planner discussed the two-year process and noted that there are no new projects for P7.0 and no new funding and that this is a statewide issue. Mr. Graham will be soliciting for projects again in June 2025.

Public Transit Update

David Graham welcomed Melissa Rector, Transportation Director for Alleghany in Motion.

Division Engineers' Report (Division 11 and 13 Representatives)

David Wayne, and Kenny Heavner discussed Division 11 projects and updates. Chad Young discussed Division 13 projects and updates.

Transportation Planning Division Update

Reuben Crummy discussed TPD newsletter highlights and noted the draft Ashe County CTP is moving forward.

There were no committee member or public comments.

Without further business, the meeting was adjourned at 11:25 AM.

Kevin Rothrock, Chair

David Graham, Secretary

FY 2026 (July 1, 2025-June 30, 2026)
 PLANNING WORK PROGRAM
 ANNUAL FUNDING SOURCES TABLE
 High Country RPO

TASK CODE	WORK CATEGORY	RPO PROGRAM FUNDS			
		LOCAL	State	FEDERAL	TOTAL
I. DATA COLLECTION AND ASSESSMENT					
I-1	DATA COLLECTION AND ASSESSMENT	\$ 470	\$ 1,410	\$ 7,520	\$ 9,400
I-1.1	Highway				
I-1.2	Other Modes				
I-1.3	Socioeconomic				
I-1.4	Title VI				
II. TRANSPORTATION PLANNING					
II-1	COMPREHENSIVE TRANSPORTATION PLAN (CTP) DEVELOPMENT	\$ 1,500	\$ 4,500	\$ 24,000	\$ 30,000
II-1.1	Develop CTP Vision				
II-1.2	Conduct CTP Needs Assessment				
II-1.3	Analyze Alternatives and Environmental Screening				
II-1.4	Develop Final Plan				
II-1.5	Adopt Plan				
II-2	PRIORITIZATION	\$ 1,000	\$ 3,000	\$ 16,000	\$ 20,000
II-2.1	Project Prioritization				
II-3	PROGRAM AND PROJECT DEVELOPMENT	\$ 400	\$ 1,200	\$ 6,400	\$ 8,000
II-3.1	STIP Participation				
II-3.2	Merger / Project Development				
II-4	GENERAL TRANSPORTATION PLANNING	\$ 1,050	\$ 3,150	\$ 16,800	\$ 21,000
II-4.1	Regional and Statewide Planning				
II-4.2	Special Studies, Projects and Other Trainings				
II-4.2.1	Special Study #1 - insert name of consultant-led study here	\$ -	\$ -	\$ -	\$ -
II-4.2.2	Special Study #2 - insert name of consultant-led study here	\$ -	\$ -	\$ -	\$ -
III. ADMINISTRATION OF TRANSPORTATION PLANNING AND POLICIES					
III-1	ADMINISTRATIVE ACTIVITIES	\$ 1,467	\$ 4,400	\$ 23,469	\$ 29,336
III-1.1	Administrative Documents				
III-1.2	TCC / TAC Work Facilitation; Ethics Compliance				
III-1.3	Program Administration				
IV. DIRECT COSTS					
IV-1	PROGRAMMATIC DIRECT CHARGES	\$ 10	\$ 30	\$ 160	\$ 200
IV-1.1	Program-wide Direct Costs				
IV-2	ADVERTISING	\$ 15	\$ 45	\$ 240	\$ 300
IV-2.1	News Media Ads				
IV-3	LODGING, MEALS, INCIDENTALS	\$ 125	\$ 375	\$ 2,000	\$ 2,500
IV-3.1	Hotel Costs				
IV-3.2	Meal Costs				
IV-3.3	Incidentals				
IV-4	POSTAGE	\$ 3	\$ 8	\$ 40	\$ 50
IV-4.1	Mailings				
IV-5	REGISTRATION / TRAINING	\$ 15	\$ 45	\$ 240	\$ 300
IV-5.1	Conference Registration				
IV-5.2	Meeting / Workshop / Training Fees				
IV-6	TRAVEL	\$ 210	\$ 630	\$ 3,360	\$ 4,200
IV-6.1	Mileage Reimbursement				
IV-6.2	Car Rental Costs				
IV-6.3	Other Travel Expenses				
V. INDIRECT COSTS					
V-1	INDIRECT COSTS	\$ 2,911	\$ 8,732	\$ 46,571	\$ 58,214
V-1.1	Incurred Indirect Costs				
RPO OPERATIONAL EXPENSE TOTAL		\$ 9,175	\$ 27,525	\$ 146,800	\$ 183,500

Approved by the TAC on: _____ 20__

 Signature, TAC Chairman

 Signature, RPO Secretary

FY 2026 (July 1, 2025-June 30, 2026)
PLANNING WORK PROGRAM
 Narrative
 High Country RPO

I. DATA COLLECTION AND ASSESSMENT			
I-1 DATA COLLECTION AND ASSESSMENT			\$ 9,400.00
I-1.1 Highway			
	Project Mapping, E911 Centerline Database Management		
I-1.2 Other Modes			
I-1.3 Socioeconomic			
I-1.4 Title VI			
II. TRANSPORTATION PLANNING			
II-1 COMPREHENSIVE TRANSPORTATION PLAN (CTP) DEVELOPMENT			\$ 30,000.00
II-1.1 Develop CTP Vision			
	Watauga County CTP Update Planning Process		
II-1.2 Conduct CTP Needs Assessment			
II-1.3 Analyze Alternatives and Environmental Screening			
II-1.4 Develop Final Plan			
II-1.5 Adopt Plan			
II-2 PRIORITIZATION			\$ 20,000.00
II-2.1 Project Prioritization			
	Facilitation of Local Projects for the State Transportation Improvement Program		
II-3 PROGRAM AND PROJECT DEVELOPMENT			\$ 8,000.00
II-3.1 STIP Participation			
	Review and Report Status of STIP projects to RTCC/RTAC, Attend STIP Meetings		
II-3.2 Merger / Project Development			
	Facilitate Local Input for Projects		
II-4 GENERAL TRANSPORTATION PLANNING			\$ 21,000.00
II-4.1 Regional and Statewide Planning			
	Attend NCARPO Quarterly Meetings and Prioritization Workgroup Meetings		
II-4.2 Special Studies, Projects and Other Trainings			
	Regional travel demand model and other studies		
II-4.2.1 Special Study #1 - insert name of consultant-led study here			\$ -
II-4.2.2 Special Study #2 - insert name of consultant-led study here			\$ -
III. ADMINISTRATION OF TRANSPORTATION PLANNING AND POLICIES			
III-1 ADMINISTRATIVE ACTIVITIES			\$ 29,335.65
III-1.1 Administrative Documents			
	Preparation and Submittal of Annual and Quarterly Planning Work Program (PWP) and Reports to NCDOT TPD for Approval		
III-1.2 TCC / TAC Work Facilitation; Ethics Compliance			
	Facilitate RPO Meetings and RTCC/RTAC Membership. Facilitate and Monitor Annual NC State Ethics Requirements for RTAC Membership		
III-1.3 Program Administration			
	Provide Transportation Information and Data, Coordinate with NCDOT staff regarding Inquiries from Local Officials, Citizens, and RTCC/RTAC Members.		
IV. DIRECT COSTS			
IV-1 PROGRAMMATIC DIRECT CHARGES			\$ 200.00
IV-1.1 Program-wide Direct Costs			
	Regular Costs of Operation of the HCRPO Program		
IV-2 ADVERTISING			\$ 300.00
IV-2.1 News Media Ads			
	Meeting Notices		
IV-3 LODGING, MEALS, INCIDENTALS			\$ 2,500.00
IV-3.1 Hotel Costs			
	Costs for Overnight Stays at NCARPO Quarterly Meetings, Prioritization Workgroup, and Other Meetings and Trainings		
IV-3.2 Meal Costs			
	Meal Costs while on Overnight or Extended Travel		
IV-3.3 Incidentals			
IV-4 POSTAGE			\$ 50.00
IV-4.1 Mailings			
	Costs for Mailing Materials		
IV-5 REGISTRATION / TRAINING			\$ 300.00
IV-5.1 Conference Registration			
	Conference Registration		
IV-5.2 Meeting / Workshop / Training Fees			
	Training Registration		
IV-6 TRAVEL			\$ 4,200.00
IV-6.1 Mileage Reimbursement			
	Reimbursement for Total Miles Traveled (0.70 per mile)		
IV-6.2 Car Rental Costs			
IV-6.3 Other Travel Expenses			
	Parking Etc...		
V. INDIRECT COSTS			
V-1 INDIRECT COSTS APPROVED BY COGNIZANT AGENCY			\$ 58,214.35
V-1.1 Incurred Indirect Costs			
	Indirect costs incurred for the RPO program		
RPO OPERATIONAL EXPENSE TOTAL			\$ 183,500.00

Blue Ridge Parkway

Helene Recovery Fact Sheet

National Park Service
U.S. Department of the Interior



Photo caption: Collapse of roadbed and slope at milepost 337 near Gooch Gap, NC. NPS Photo.

Overview

Hurricane Helene struck the Blue Ridge Parkway on September 27, 2024, heavily damaging the Parkway motor road, facilities, trails, and other infrastructure. Helene brought up to 30 inches of rain coupled with wind gusts of up to 100 mph to some areas resulting in catastrophic flooding, landslides, washed out roads, and countless downed trees. Recovery work to clear debris and repair damage will be measured in months, and in some cases years, due to the extent of the impacts.

Some of the most significant damage to the Parkway's primary roadway occurred in North Carolina. The NPS has identified at least 57 landslides across approximately 200 miles of Parkway in North Carolina, stretching from the Virginia-North Carolina boundary to beyond Mount Pisgah, south of Asheville. While the road is open in all 217 miles of Parkway in Virginia, weather permitting, additional repair and clean-up work remains.

Funding to Restore the Parkway

Funding for storm recovery will be available from multiple sources, including a portion of the more than \$2 billion in supplemental disaster funding Congress allocated to the NPS. The park has already benefited from \$25 million in funding from the U.S. Department of Transportation's Federal Highway Administration (FHWA) emergency relief funds.

Recovery Progress

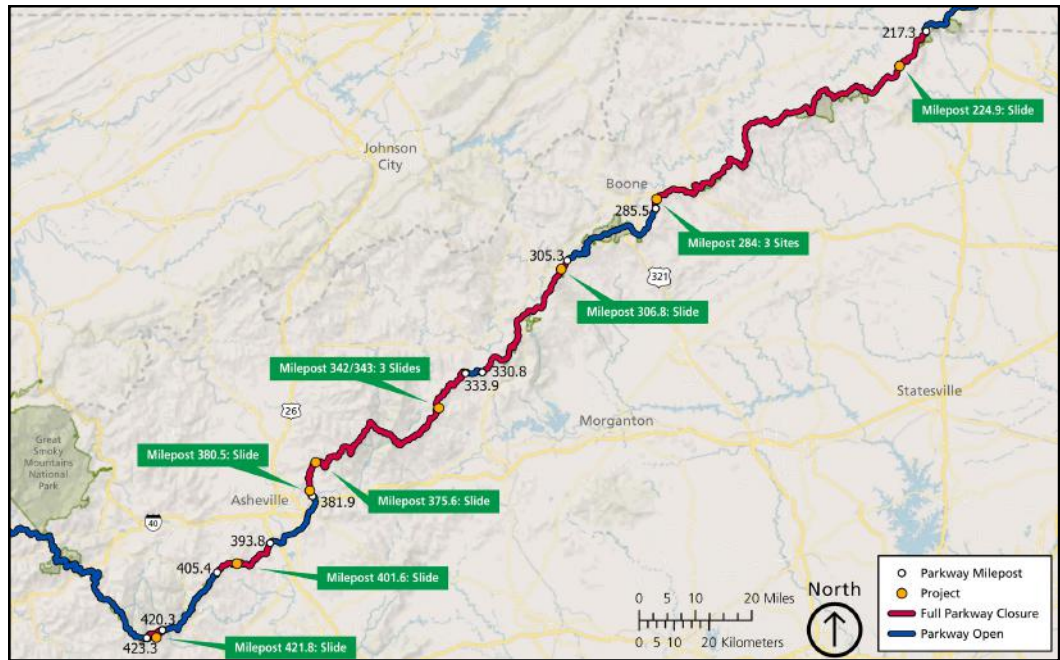
The NPS is working closely with FHWA to perform emergency stabilization and repair work at eight slide locations near critical transportation networks, and to complete debris removal and guardrail repairs. Contracts have been awarded and work has begun and is expected to continue across the summer. Once the stabilization work is complete and the road repaired, crews will be able to access other sections of the Parkway where debris clearing, drainage and culvert repairs, slope stabilization, and other infrastructure work is needed to safely reopen the road. Estimated completion and reopening dates will be updated on the park's website regularly.

Milepost	Location	Target Start Date
224.9	North of Doughton Park, NC	In Progress
284	Boone, NC	In Progress
306.8	Beacon Heights, NC	Summer 2025
342 - 343	Spruce Pine, NC	In Progress
375.6 and 380.5	North of Asheville, NC	In Progress
401.6	South of Asheville, NC	In Progress
421.8	Devil's Courthouse, NC	Spring 2025

Chart showing location and timing for stabilization work.

Map of Emergency Stabilization Areas

The map shows locations along the Parkway in NC where initial stabilization and repair work is underway. Sections highlighted in red are currently closed due to Helene damage or are where active repair and construction activity is in progress.



Closures and Safety

The hurricane has left behind unstable terrain, hidden hazards, and compromised landscapes and structures that may not be immediately visible. Conditions continue to evolve as the landscape adjusts, making closed areas extremely dangerous to visitors. Behind the barriers, recovery crews are using loud, heavy, and potentially dangerous equipment. Workers may not see you or your pets if you trespass, putting everyone at risk. Entering closed areas creates additional hazards for workers and park staff, slowing progress and delaying the reopening of the park.

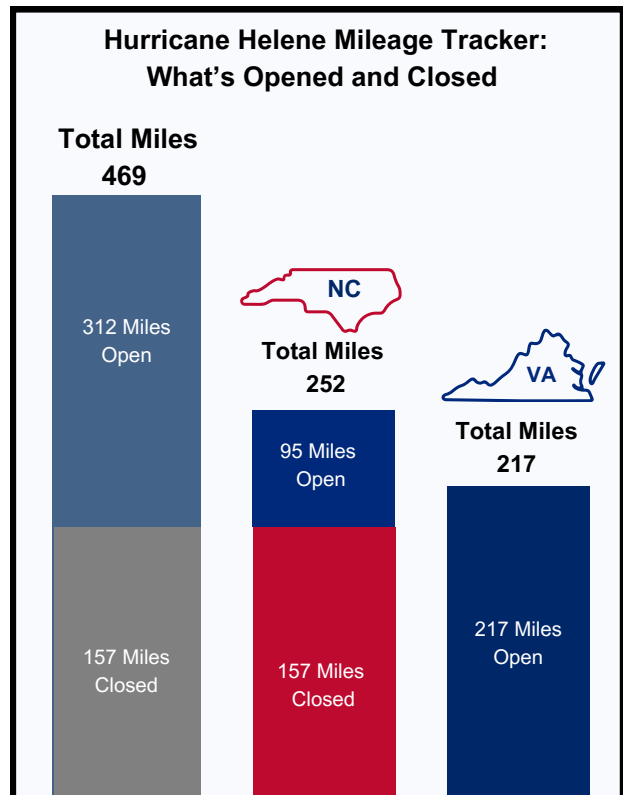
Recreate Responsibly

Given the storm's sometimes hidden impact to many sections of the road, winter weather-related closures also include all recreational use. For safety reasons, the park asks that people respect all closures, including trails within closed sections. With snow, rain and wind, additional treefall and slides are possible across the area. Visitors should consult the park's online [road status](#) for updates.

Where to Find Information

Current conditions and updates about the Parkway are found online at www.nps.gov/blri and the park's social media platforms at @BlueRidgeNPS (Facebook, X, and Instagram). Additional images are also available on NPGallery's [public domain image and video gallery](#).

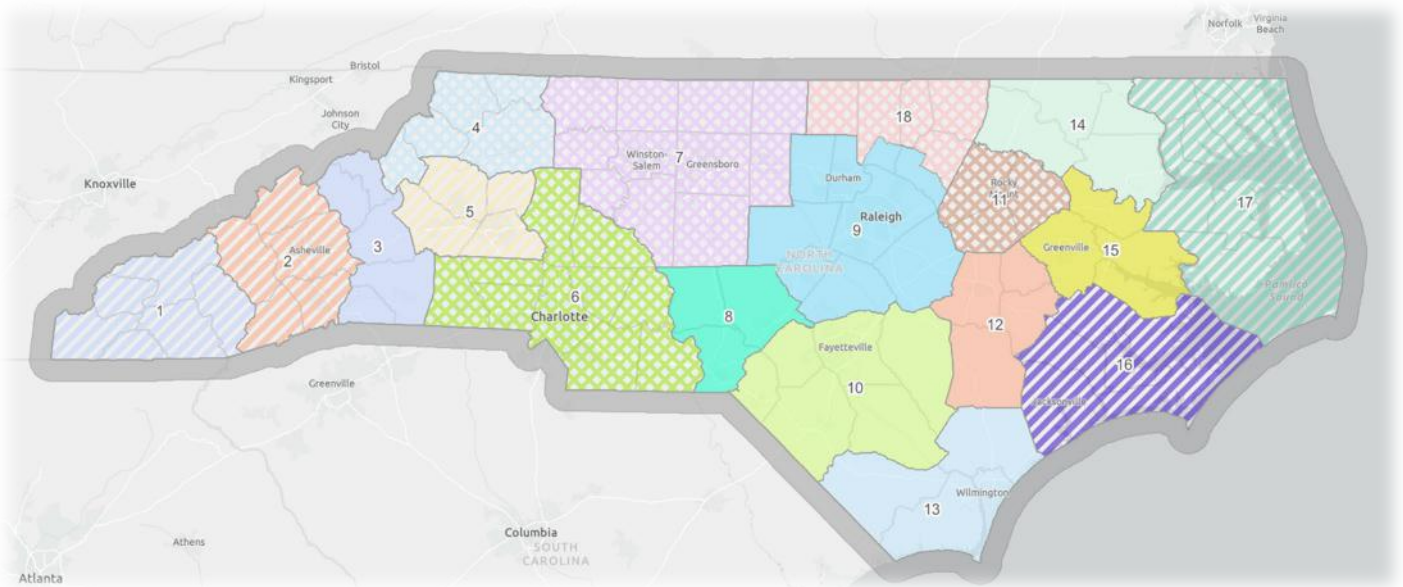
For updates on Hurricane Helene recovery efforts, scan the QR code below:



Note: This graph reflects miles opened and closed due to Hurricane Helene recovery and GAOA construction. It does not include temporary closures due to weather.

Travel Demand Models

Travel demand models (TDM) are tools that provide transportation planners or decision makers with information on the conditions of a transportation system during scenario analysis. The North Carolina Department of Transportation (NCDOT) is the model custodian of numerous TDMs across the state of North Carolina. All TDMs may have certain common elements, however each TDM is developed to capture the travel behavior characteristics unique to that region. The map below illustrates TDM regions across the state.



Source: NCDOT

Alpesh Patel, NCDOT Transportation Planning Division Director, will provide an overview presentation on the upcoming Region 4 TDM for Wilkes, Alleghany, Ashe, Watauga, and Avery counties. The presentation will cover how the TDM will use current travel behavior to predict future travel patterns as well as forecast the transportation needs of the region.

MEMORANDUM

To: High Country RPO RTCC/RTAC

From: David Graham, High Country RPO Transportation Planner

Re: Prioritization 8.0 – 2028-2037 State Transportation Improvement Program (STIP)

The next round of project prioritization (P8.0) is set to begin soon. The first step in the process is the solicitation of new transportation projects for funding consideration in the 2028-2037 STIP. According to the attached P8.0 Schedule, the project submittal window opens in early July and closes at the end of September this year. Therefore, I will be soliciting projects from all 7 high country county managers in early June and asking that counties coordinate with their respective municipalities for project submittals. The Village of Sugar Mountain asked that the attached resolution be included as part of this agenda item.

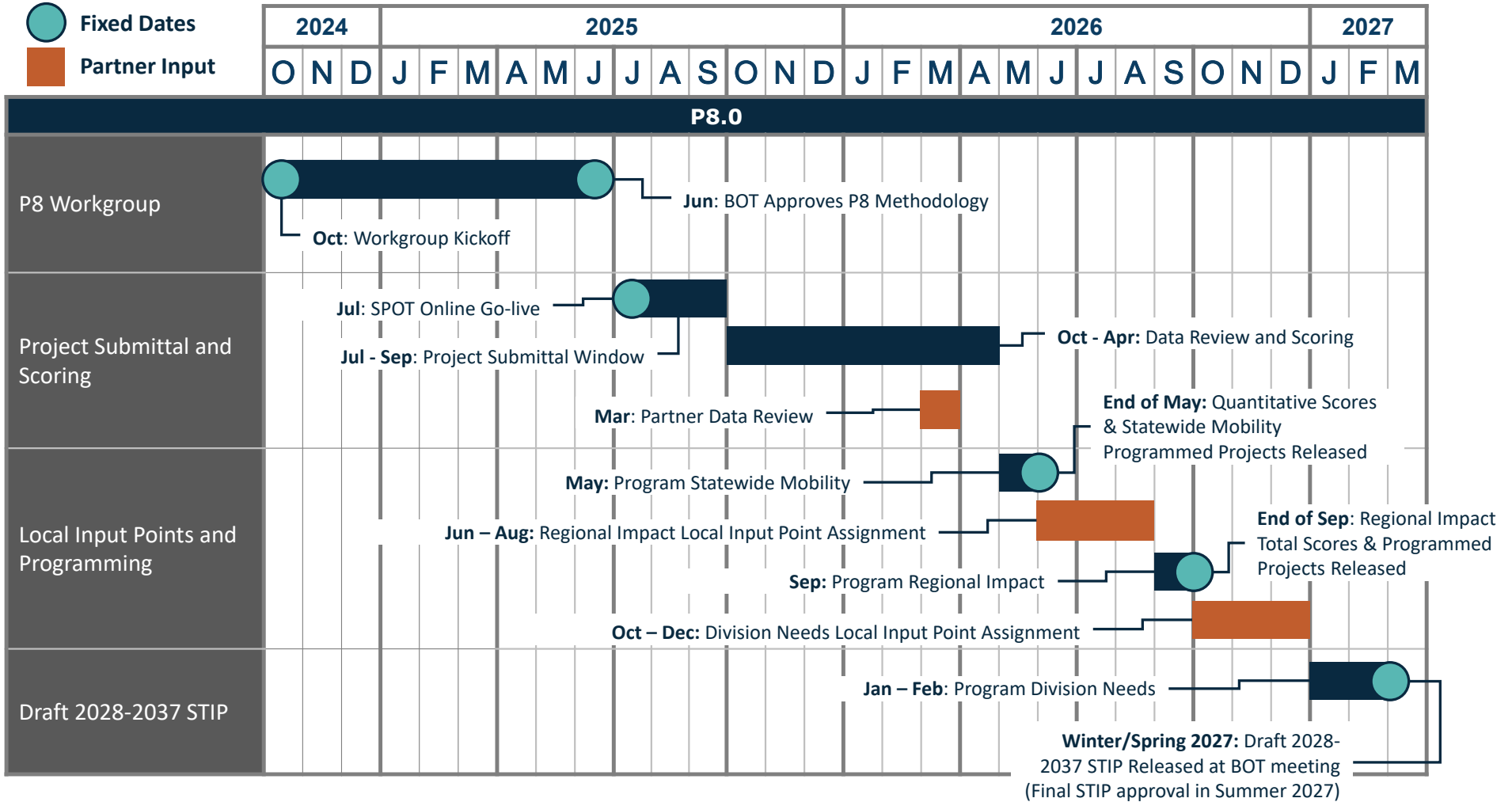
The North Carolina Department of Transportation (NCDOT) is anticipating some funding to be available for P8.0 to fund projects in the 2028-2037 STIP. However, as construction costs continue to rise and more accurate cost estimates are being developed, there has become a need to reduce the number of projects submitted for available funding from planning organizations (RPO's & MPO's) and NCDOT Divisions. The options being considered are the reduction of project submittals by 30% and reduction in local input points which are subject to NCDOT Board of Transportation approval.

I will keep the RTCC and RTAC informed as more information becomes available regarding the P8.0 process.

P8 Schedule

October 2024

- Fixed Dates
- Partner Input





Resolution

Village of Sugar Mountain
North Carolina

Date: 04/10/2025

**RESOLUTION REQUESTING THAT THE NCDOT WIDEN THE LANES OF
THE TYNECASTLE INTERSECTION AND IMPROVE THE SHOULDER AND
GUTTERING ON HIGHWAY 184**

Res. No. 2025-5

WHEREAS, the Village of Sugar Mountain (“Village”) is a municipal corporation and body politic of the State of North Carolina; and

WHEREAS, widening the intersection of Highway 105 and Highway 184 at Tynecastle and improving the shoulder and guttering on Highway 184 would have a positive benefit on the economy of Sugar Mountain measuring in the millions of dollars; and

WHEREAS, an economic impact study recently carried out by the North Carolina Ski Areas Association determined that the ski resorts create an annual economic impact for Western North Carolina in an annual amount of Two Hundred Forty-Four Million Dollars (\$244,000,000.00), and that local resorts have proven, positive economic benefits which would benefit from such a project; and

WHEREAS, the largest two ski areas in North Carolina are accessed by tourists and guests from Highway 105 and Highway 184, which is presently insufficient to meet the demands imposed by the traveling population; and

WHEREAS, improving this intersection and the curb and guttering will promote a better experience for those visiting the North Carolina mountains, while also improving safety and traffic flow at the intersection of Highway 105 and Highway 184 at Tynecastle, as well as increased safety and traffic flow by improving the shoulder and guttering along Highway 184.

NOW, THEREFORE the Village Council of the Village of Sugar Mountain, North Carolina, **RESOLVES**:

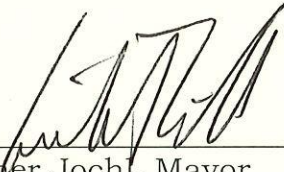
SECTION I. The Village Council for the Village of Sugar Mountain formally petitions the Department of Transportation to widen the intersection of Highway 105 and Highway 184 at Tynecastle, to include longer turn lanes and an improved intersection; and

The Village Council for the Village of Sugar Mountain further petitions the Department of Transportation to improve the shoulder and guttering along Highway 184.

SECTION II. The Village Manager shall forward this request to the High Country Rural Transportation Planning Organization (RPO) at the High Country Council of Governments, Michael Poe, PE (District 11 Engineer), and Meagan Phillips (District 11 Representative to the North Carolina Department of Transportation Board).

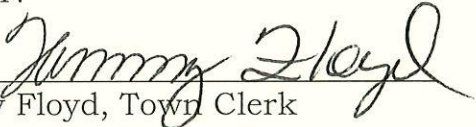
READ, CONSIDERED, PASSED AND APPROVED at a regular meeting of the Village Council of the Village of Sugar Mountain, North Carolina at which a quorum was present and which was held on the 15th day of April, 2025.

Adopted this the 15th day of April, 2025.



Gunther Jochi, Mayor

ATTEST:



Tammy Floyd, Town Clerk

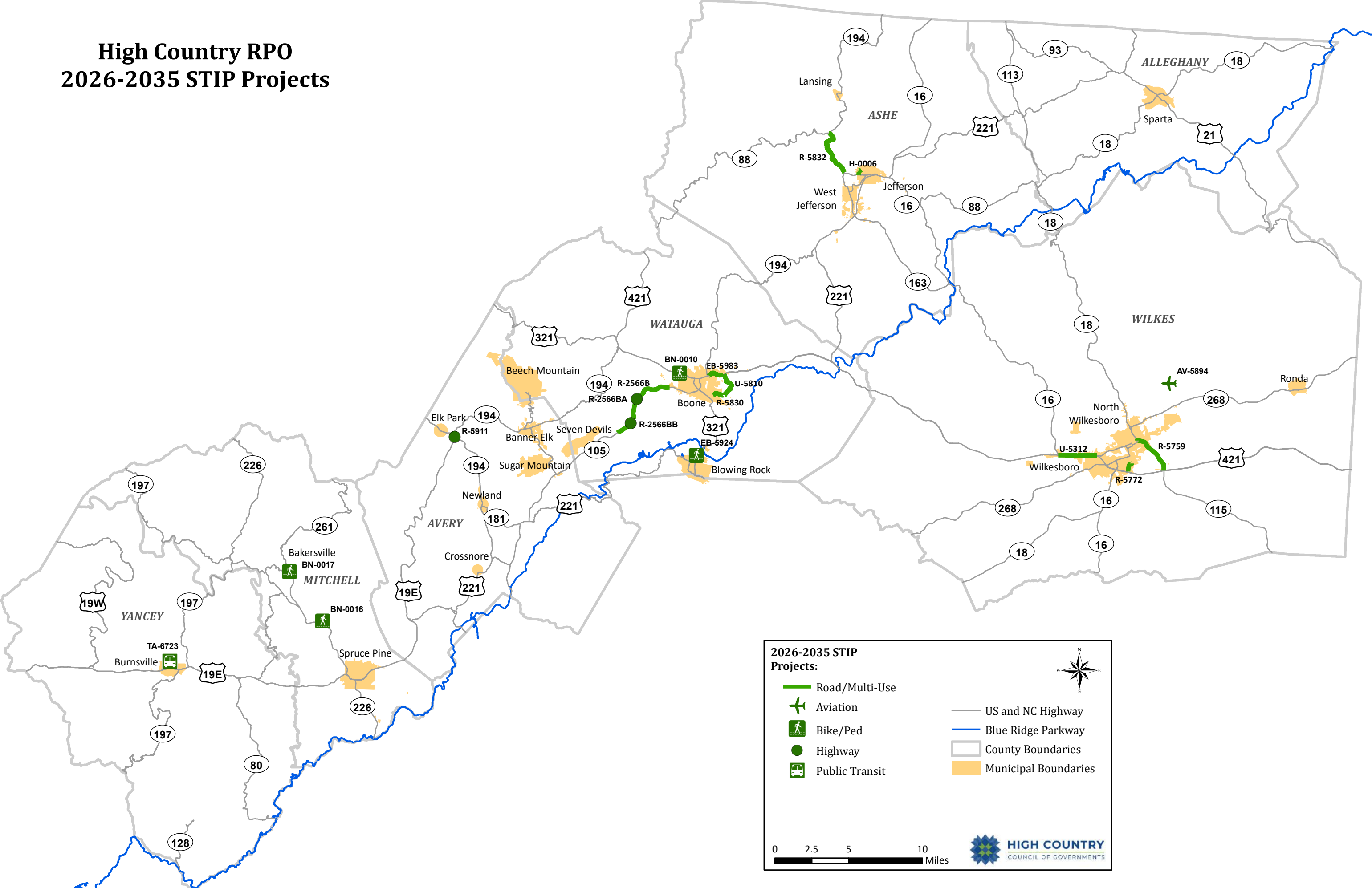
May 2025 Project Development Update

COUNTY	ROUTE	DESCRIPTION	MODE	PROJECT ID	RIGHT-OF-WAY SCHEDULE	CONSTRUCTION SCHEDULE
ASHE	NORTHWEST DRIVE, AEV LANE	NORTHWEST DRIVE FROM NC 88 TO BENFIELD DRIVE AND AMERICAN EMERGENCY VEHICLES LANE FROM NORTHWEST DRIVE TO AMERICAN EMERGENCY VEHICLES FACILITY. WIDEN ROAD TO 12' LANES.	Highway	HA-0006	2025	2025
ASHE	NC 88	NC 88 TO NC 194. UPGRADE ROADWAY.	Highway	R-5832	2025	2028
MITCHELL	SR 1193 (LEDGER SCHOOL ROAD)	NC 226 TO MITCHELL HIGH SCHOOL. CONSTRUCT SIDEWALK.	Bike & Ped	BN-0016	2025	2026
MITCHELL	SR 1260	NORTH OF SR 1278 (BAKERS LANE) TO WILLIS COVE ROAD. CONSTRUCT SIDEWALK.	Bike & Ped	BN-0017		2025
WATAUGA	TOWN OF BLOWING ROCK	MIDDLE FORK GREENWAY, SECTION 1. CONSTRUCT GREENWAY. NC FLAP BLOWING ROCK 321(1).	Bike & Ped	EB-5924	2023	2024

COUNTY	ROUTE	DESCRIPTION	MODE	PROJECT ID	RIGHT-OF-WAY SCHEDULE	CONSTRUCTION SCHEDULE
WATAUGA	US 421/ US 321 (WEST KING STREET)	SR 1180 (POPLAR GROVE CONNECTOR ROAD) TO WESTWOOD APARTMENTS IN BOONE. CONSTRUCT SIDEWALK AND OTHER CORRIDOR IMPROVEMENTS.	Bike & Ped	BN-0010	2025	2025
WATAUGA	US 421 (KING STREET) MULTI-USE PATH	GROVE STREET TO BROOKSHIRE ROAD. CONSTRUCT MULTI-USE PATH.	Bike & Ped	EB-5983	2026	2027
WATAUGA	NC 105	SR 1136 (CLARKS CREEK ROAD) TO SR 1107 (NC 105 BYPASS) IN BOONE.	Highway	R-2566B	2022	2030
WATAUGA	NC 105	CONSTRUCT NEW BRIDGE OVER WATAUGA RIVER AND LEFT-TURN LANE AT SR 1112 (BROADSTONE ROAD).	Highway	R-2566BA		Under Construction
WATAUGA	NC 105	SR 1658 (OLD SHULLS MILL ROAD) INTERSECTION. REALIGN SR 1658 (OLD SHULLS MILL ROAD).	Highway	R-2566BB		2025
WATAUGA	SR 1522 (DEERFIELD ROAD)	STATE FARM ROAD TO SR 1523 (WILSON RIDGE ROAD). UPGRADE ROADWAY.	Highway	R-5830	2025	2028

COUNTY	ROUTE	DESCRIPTION	MODE	PROJECT ID	RIGHT-OF-WAY SCHEDULE	CONSTRUCTION SCHEDULE
WATAUGA	SR 1514 (BAMBOO ROAD); SR 1523 (WILSON RIDGE)	US 421/US 221 TO SR 1522 (DEERFIELD ROAD). MODERNIZE ROADWAY.	Highway	U-5810	2022	2025
WILKES	WILKES COUNTY AIRPORT (UKF)	EXTEND RUNWAY TO 7,000 FEET.	Aviation	AV-5894	2025	2027
WILKES	SR 1001 (OAKWOODS ROAD)	US 421 TO FOREST HILLS DRIVE. UPGRADE ROADWAY.	Highway	R-5772	2026	2027
Wilkes	NC 115	WIDEN EXISTING ROADWAY FROM US 421 TO 2ND STREET	Highway	R-5759	2022	2026
WILKES	US 421	NC 16 TO US 421 BUSINESS. CONVERT EXISTING ROADWAY TO REDUCED CONFLICT INTERSECTIONS AND ADD SERVICE ROADS.	Highway	U-5312		Under Construction
YANCEY	YANCEY COUNTY TRANSPORTATION	CONSTRUCT OFFICE / TRAINING / MAINTENANCE FACILITY.	Transit	TA-6723		Under Construction

High Country RPO 2026-2035 STIP Projects



2026-2035 STIP Projects:

Road/Multi-Use	US and NC Highway
Aviation	Blue Ridge Parkway
Bike/Ped	County Boundaries
Highway	Municipal Boundaries
Public Transit	

0 2.5 5 10 Miles